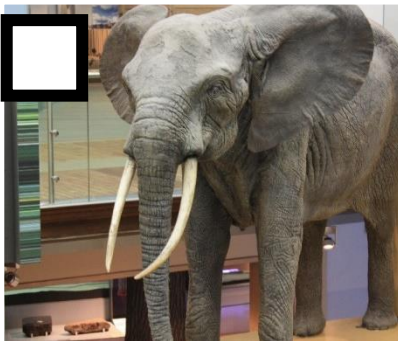
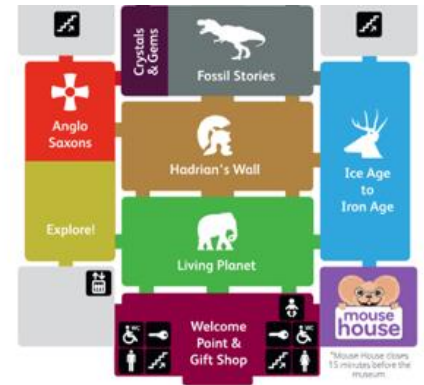


Beginners Scavenger Hunt (One gallery at a time)

Follow the route to find all these objects in the museum!

- You can put a tick in the box when you find the object.
- This scavenger hunt starts on the ground floor. Use the map to help you find your way around.
- **Supervising adults:** please make sure you can see all members of your group during this activity. We recommend one adult per small group.



Start in the Living Planet gallery. Can you find the elephant?

Fun fact: This model arrived at the museum by lorry - imagine seeing that on the road!



Next, go to the Hadrian's Wall gallery. Can you find this stone head?

Fun fact: This is called Atenochiticus (say 'an - ten - oh - kit - ick - us')



Go to the Fossil Stories gallery. Can you find the ichthyosaur?

Fun fact: This isn't even the biggest ichthyosaur ever found!



Go to Ice Age to Iron Age. Can you find the Irish elk?

Fun fact: In the Ice Age, elk like this also lived here.



Go to Explore! Can you find the bronze eagle?

Fun fact: This used to sit on top of the gateposts of the museum.



Find the Crystals and Gems display. Can you find this ornament?

Fun fact: The green stones are emeralds. This is a turban ornament.



Beginners Scavenger Hunt (One gallery at a time)



Now it is time to head upstairs to the first floor. Take the stairs or one of the lifts.



Go to the Ancient Greeks gallery. Can you find this plate?

Fun fact: The well in the centre was designed to hold a dip or sauce.



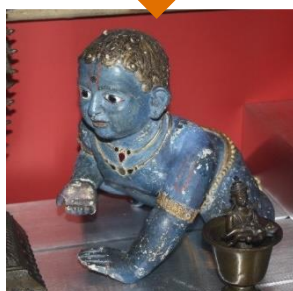
Next, go to the Ancient Egypt gallery. Can you find this mask?

Fun fact: Ancient Egyptians believed in an 'afterlife' after death.



Go to the Roman Empire display. Can you find this giant foot?

Fun fact: this type of rock is called porphyry. (say 'pour - fur - ee')



Go to the World Cultures gallery. Can you find this sculpture?

Fun fact: This is a representation of Krishna, a Hindu god.



Go to the Natural Northumbria gallery. Can you find this fox?

Fun fact: foxes can run as fast as cars drive in town - 30 miles per hour!

Well done! You have now finished the Great North Museum Scavenger Hunt!

For more of a challenge, try our challenging scavenger hunt next time.