



Sensory Trail through Time

A focused trail to explore the objects to touch and interact with in Fossil Stories

- For younger children or those with lower literacy levels, use this trail yourself to lead them through and have the questions as prompts
- For older children or those with sufficient literacy, print out the trail for them to use
- Start at the end of the Fossil Stories gallery furthest from the T rex



Sensory Trail through Time:

A focused trail to explore the objects to touch and interact with in **Fossil Stories**

Weave your way through the Fossil Stories Gallery to find the items below to touch...

Feel the Crinoidal Limestone

Crinoids are plants that look like sea creatures, true or false?



Use the Touch Screen

Strepsodus was a top predatory fish- even land animals were not safe, true or false?

Feel the Piddock Bored Rock

The holes in this rock were drilled by a shellfish called a Piddock, true or false?



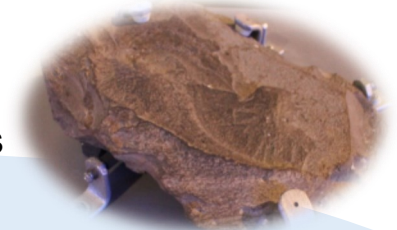
Feel the Paleoniscum

Paleoniscum has been found inside the fossilised stomachs of larger fish, true or false?



Feel the Mussel Beds

Mussels live in small groups on the land, true or false?



Carboniferous 359-299 million years ago

During the carboniferous period our area was like a tropical swamp with a big river delta system running through it. Lots of plants turned into fossilised coal during this period. The warm seas were full of mussel beds. Animals evolved legs in the shallow seas and moved onto land for the first time.

Permian 299-251 million years ago

During the Permian period our area was like a desert surrounded by tropical reefs after the collapse of the tropical forests. Many groups of animals became extinct at the end of the Permian, giving rise for the age of reptiles... see overleaf.

Feel the Fossilised Tree Trunks

Clubmosses called Sigillaria were common in the swamps of this period, true or false?



Feel the Bryozoans

The area around Sunderland was once like a tropical barrier reef made of Bryozoans, true or false?





Feel the Ammonite

The largest ammonites in the world are 1m across in size, true or false?



Use the Touch Screen

Ichthyosaurs are still alive today, true or false?

Feel the Iguanodon Skull

This is the skull of a herbivorous dinosaur that was found in Britain, true or false?



Feel the Scallops

Scallops caught their prey by snapping their shells shut, true or false?



Triassic 251-199 million years ago

During the Triassic period, our area was mostly hot and dry. There was only one big mass of land called Pangea, surrounded by the biggest ocean ruled by ichthyosaurs! Early dinosaurs, flying reptiles and mammals evolved on land in this period.

Cretaceous 145-65 million years ago

During the Cretaceous period, our area was like a tropical swamp and when sea level rose, oceans were generally warm, with huge marine reptiles like mosasaurs becoming top predators in the water. Many groups of animals became extinct at the end of the Cretaceous, including the dinosaurs.



Feel the Imprint Plate

What fossils can you name?

Jurassic 199-145 million years ago

During the Jurassic period, our area was mostly under shallow warm seas, and a range of marine reptiles ruling the seas amongst coral reefs. Pangea was broken apart. Dinosaurs ruled the land, where increased rainfall meant more lush rainforests. Feathered fossils have been found.



Feel the T. rex Tooth

The teeth were flat and narrow for snipping off leaves, true or false?

