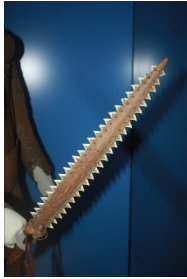


Sharks' skeletons are not made of bone—look in the Bones exhibition to see some and find out what are they made of: _____. Their teeth are much harder than their skeletons; where was this knife using sharks teeth made? You can see it in the **World Cultures** gallery: _____



People have used bone to make all sorts of tools—what is this one? You can find it in the **Hadrian's Wall** gallery (look in Frontier Homes): _____

There's a big skeleton that lives in the museum all the time and you can find it in the **Fossil Stories** gallery. What was special about its bones to help such a big animal stand up and move? They were _____



Now look around the Bones exhibition. What are the biggest and smallest skulls you can find in there?

Biggest: _____

Smallest: _____

What's your favourite thing in the Bones exhibition?

Why do you like it?

Bones



Skeleton Secrets of the Animal World

Match the skeletons in the Bones exhibition to the animals they came from—and see how people have used some bones in different ways.



Whose skull is this? _____

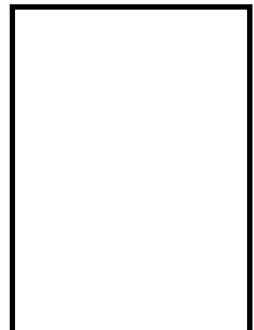
Can you find the animal in the **Living Planet** gallery?

Find this animal in the Living Planet gallery. What is it? _____

Now find its skeleton in the Bones exhibition. Near it is a much bigger animal with a similar skull. What is special about how the giant anteater moves?



The seal in the **Natural Northumbria** gallery looks quite cute..... Now find the seal skulls in the Bones exhibition and draw a seal tooth here:
Still think it's cute?





Find this long eared bat in the woodlands area of the **Natural Northumbria** gallery. Can you see the bones in its wings?

Watch the film about bats flying in the Bones exhibition and have a look at the bat and bird skeletons. What makes bats' wings different from birds even though they both fly?

Have a look at the display of antlers in the Bones exhibition. There's another creature with huge antlers in the **Ice Age to Iron Age** gallery. What is it?



 What kind of tools could prehistoric people make out of antlers?

At the Iron Age end of the gallery, can you find out why there are not many bones preserved in the Northumberland uplands?



Find some ancient skeleton material in the Bones exhibition that tell us about other animals from the past. Can you find bones from two animals which are now extinct?

----- and -----

Find the hippo skull in the Bones exhibition and have a look at its big teeth. The Ancient Egyptians had a hippo goddess, Taweret. Find the little hippo statue in the **Ancient Egypt** gallery and see how those big teeth are covered by the hippo's lips.



There is a wand made from a hippo tooth near the statue. What other animals can you see on it?

Have a look in the Bones exhibition to find some ways in which animals use their skeletons to protect themselves:



This armour in the **Ancient Greek** gallery was used for protection when just a human skeleton wasn't enough. Who would have worn it? A -----

Can you find the little statue of something using a shell to protect itself in the **Ancient Greek** gallery? What is it made of?



 Look at the real tortoise shells in the Bones exhibition. Which bits of their skeletons are part of the shell or carapace? ----- and -----